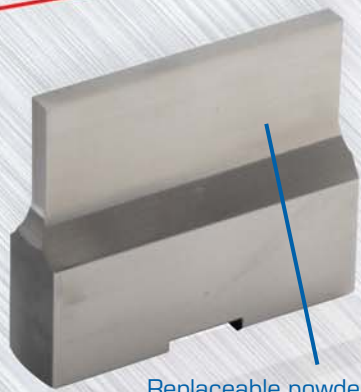


HP DURABLADE

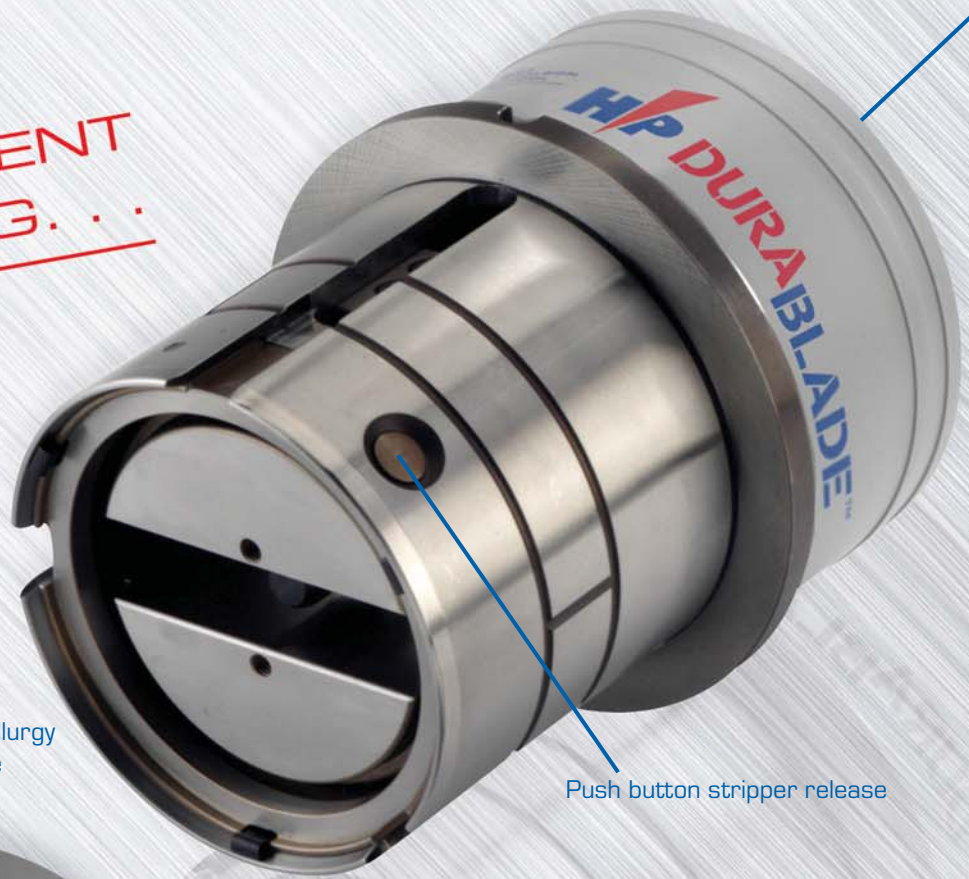
FAST EFFICIENT
SLITTING. . .



Replaceable powdered metallurgy
high speed steel punch blade



Close to clamps stripper plate



Push button
length adjustment

Push button stripper release

. . .EVEN CLOSE
TO THE CLAMPS

- **Reduced Costs**

The replaceable punch blade is made of **Ultima™**, a special powdered metallurgy high speed steel that gives you more hits between regrinds and helps to reduce down time.

- **Practical**

With its patented HP push button length adjustment and stripper release, the new **DuraBlade** assembly is quick and easy to use.

- **Increased profits**

DuraBlade is designed for improved close to clamps operation. This means that more of the sheet is available to you and less material is wasted.

- **Accurate**

The punch blade is fully guided right to the surface of the material, resulting in much cleaner results for your slitting / parting tasks and reduced wear and tear on the punch and die.

The **DuraBlade** assembly is available for the D & E stations of most thick turret machines in Standard, ABS and WLS configurations.

D Station Dura Blade	
5663	Guide Assembly (HP)
5660	Guide Assembly (WLS)
5653	Guide Assembly (ABS)
5657	Punch insert (Max. A dim. 88.9mm*)
5656	Stripper (HP-ABS - relieved on 2 sides)
5665	Stripper (HP - relieved on 1 side)
5664	Stripper (HP - relieved on 2 sides)
5666	Stripper (HP-ABS - relieved on 1 side)

E Station Dura Blade	
5639	Guide Assembly (HP)
5636	Guide Assembly (WLS)
5626	Guide Assembly (ABS)
5630	Punch insert (Max. A dim. 114.3mm*)
5629	Stripper (HP-ABS - relieved on 2 sides)
5641	Stripper (HP - relieved on 1 side)
5640	Stripper (HP - relieved on 2 sides)
5642	Stripper (HP-ABS - relieved on 1 side)

*A dimension = maximum diagonal distance across the corners

Wilson Tool International Ltd. Stirling Road, South Marston Industrial Estate, Swindon, Wiltshire SN3 4TQ

Free phone: 0800 373748 Tel: +44 (0) 1793 831818 Tel free: 1-800 70 90 09 Ireland

Free fax: 0800 373758 Fax: +44 (0) 1793 831945 Fax free: 1-800 53 55 38 Ireland

Denmark - 80 20 20 24 Denmark office - +45 44 53 16 99 Sweden - 020 79 14 19 Norway - 80 01 08 09 Finland - 0800 114 523

www.wilsontool.com sales@wilsontool.eu.com