



WILSON TOOL INTRODUCES...
ROLLING DIMPLE
WHEEL TOOL

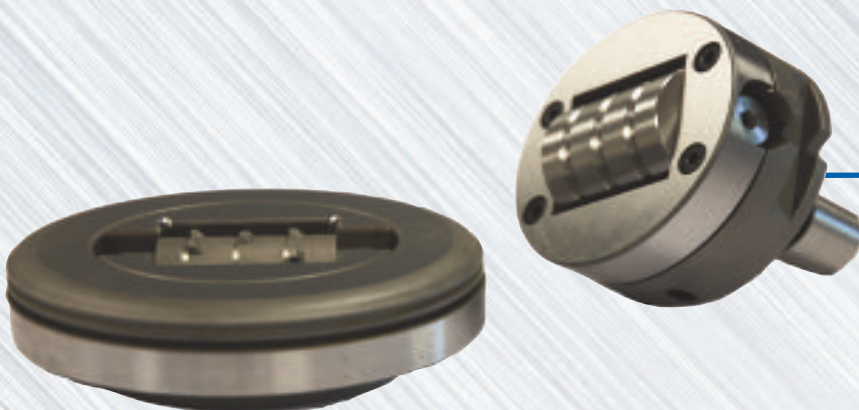
The Rolling Dimple creates a series of tiny louvers.

Examples of applications for this tool:

- Graters
- Shredders
- Grain separators
- Tread plates
- Air ventilation



Works on a wide range of material up to and including 3mm Mild Steel, Aluminium & Stainless Steel.



Available as 2 inch Thick Turret and Size 2 Trumpf.

Wilson Tool International Ltd. Stirling Road, South Marston Industrial Estate, Swindon, Wiltshire SN3 4TQ

Free phone: 0800 373748 Tel: +44 (0) 1793 831818 Tel free: 1-800 70 90 09 Ireland

Free fax: 0800 373758 Fax: +44 (0) 1793 831945 Fax free: 1-800 53 55 38 Ireland

www.wilsontool.com sales@wilsontool.eu.com